



# DC-Air4

**The NEW, 4th-Generation model by FTG**

**Available through most Full-Service Dental Dealers**

## True Wireless with Bluetooth®

The latest in Bluetooth® Low Energy technology enables DC-Air4 to rapidly and reliably transfer clinical images wirelessly to its receiver connected to the PC.

## Comfort & Convenience

Elimination of cables and patent-pending alignment system minimizes bulk and maximizes ease of positioning.

The sensor can be quickly secured into different positions in each holder for efficient and accurate acquisition of clinical images. The sensor operates with an integrated battery that can be recharged by placing it on the Docking Station.

## Built to Last

### 2-Year Warranty

Plus Optional Extended protection Plan  
With its homogenous silicon construction, DC-Air 4 is also lighter and more durable than previous generation sensors at just 13 grams. It has IP67 dust and water resistance rating, and will stand up to the demands of daily clinical use.

## Direct-Conversion Image Quality

Other sensors have to use a component called a scintillator to convert x-ray photons to visible light so they can interpret an image, but not DC-Air4.

Revolutionary direct-conversion x-ray technology converts x-rays directly to electronic signal, creating a more detailed radiograph with better clarity.

## 4th-Generation Improvements:

- \*Gold Battery cover includes Magnet for secure mounting to the charger.
- \*Battery now lasts 10+Hours when right out of the charger.
- \*More exposures per charge and more time to use Find-Mybluetooth locator app if ever needed.

## Full Kit:

- (1) DC-Air® True Wireless® Sensor
- (1) Docking Station
- (1) USB-C to USB Connection Cable
- (1) Zero Profile® Complete Holder Kit
- (1) Software / TWAIN license (one network, unlimited PCs)



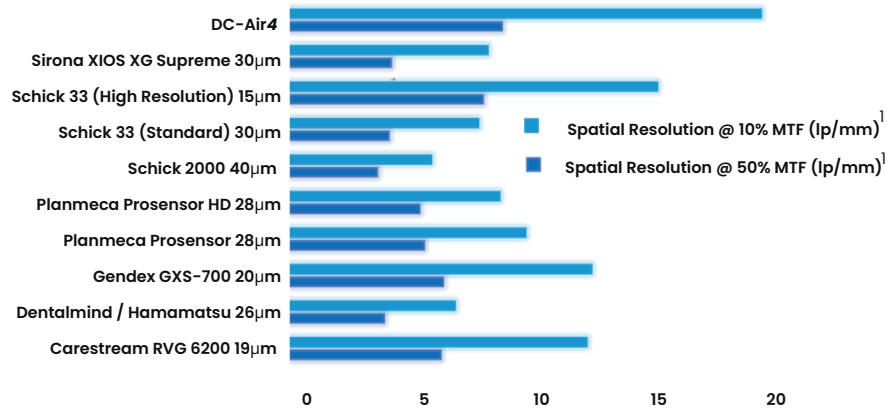
# Next-generation x-ray technology means better diagnostic clarity.

## The DC-Air4 Produces The Highest Quality Image Accuracy (IA) as Verified with MTF

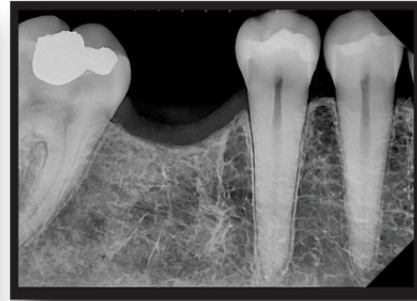
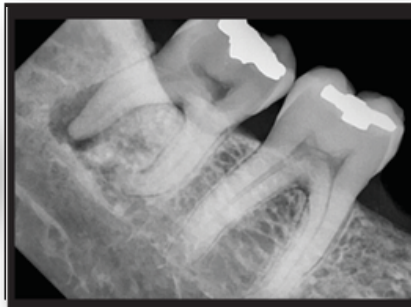
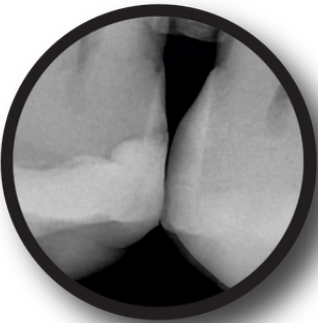
### MTF: The Objective Value for Resolution

The modulation transfer function (MTF) is the spatial frequency response of an imaging system. It is the sharpness at a given spatial frequency.

MTF is the most useful measure of true resolution because it accounts for the amount of detail and contrast over a range of spatial frequencies. DC-Air4 achieves a superior MTF value over the full range of diagnostic spatial frequencies for distinctly brilliant image quality.



### Clinical Images



### Interfaces

Radio.....Bluetooth® Low Energy  
 Wired.....USB 2.0  
 Connector type (docking station).....USB-C  
 Cable type (Docking to PC).....USB-C to USB Type A

### Technical Specifications

Detector: Single Crystal Direct Conversion Silicon/CMOS  
 Pixel physical size.....26µm  
 Exposure parameters.....0.05-0.5s, 60-70kV  
 Active Area.....35.1mm x 24.7mm  
 Pixel resolution.....12 bits  
 Number of Pixels.....1,249,920  
 MTF.....>70% @ 5lp/mm, >40% @10lp/mm  
 Resolution in Line Pairs.....**19-20LP**  
 Theoretical Resolution in Line pairs.....**38LP**  
 Weight.....**13 grams**

### Features

Sensor mode of operation.....Global Shutter  
 Triggering.....Automatic on X-Ray Start  
 Storage RAM.....4 MB  
 Number of Images in RAM.....1 Image  
 Range.....up to 3m  
 X-Rays per Recharge Cycle (continuous use).....250+

### Sensor Battery

Type.....Lithium-Ion  
 Capacity.....19mAH

### Docking Station Power

Input Voltage.....+5V ± 10%  
 Input Power (Max).....2.5W

### Environmental

Ambient Operating Temperature.....+50°F to +95°F  
 Transportation Temperature.....-4°F to +122°F  
 Storage Long Term.....32°F to +95°F  
 Humidity (non-condensing).....30% - 95%

### Hardware Dimensions

